

MBT's 2011 Annual Meeting

We wanted our 2011 Annual Meeting to be a "blast" as in fun and fellowship! We did not plan for it to be a winter blast which is what we got! An early snowfall greeted our guests as they arrived and during the morning business meeting the weather got increasingly worse, forcing some who were registered to turn around and head back home. Others had to excuse themselves and skip the great luncheon to head home before having to possibly spend the night in Hershey. In the past, we generally had excellent Fall weather for this late Fall annual meeting event. Many members recall the 3 to 4 hour motorcoach tour always planned following the meeting, many times without a cloud in the sky!



At any rate, we had 71 registered this year which was quite an increase from the 57 registered in 2010. About 60 actually attended but several from Northeastern Pennsylvania and mid-New Jersey were not able to make it due to the weather.

DeCamp Bus Lines, Inc from Montclair, NJ was our guest company this year. This firm is proud of its 141 year history in the transportation business. Irwin Pantel, Controller, made a fine power point presentation on the company's organization and made it even more interesting by including some political and historical facts as it related to the company's growth over the years.

Mr. Pantel indicated that the acquisition of several smaller companies over

the years contributed to its growth but then had to make a decision to sell off some of the lines and equipment to "fit" into a newly purchased smaller maintenance and office facility. For example, they purchased West Hunterdon Transit and operated it for a period of time but then sold it to Trans-Bridge Lines.

The membership was also treated to some photographs of White, ACF's, and DeCamps entry into the more deluxe commuter service using 4104's, 4903's, even 2 MC-7s (short lived). Later Prevost, Van Hools, and several MCI models rounded out their fleet.

The presentation was very well received with many questions being asked of their operations. DeCamp brought a nearly new D-4505 for display in front of the Museum.

Member **Andy Henderson** presented a very interesting slide show of buses taken by his father back in the era of the 1950's and 1960's. We want to thank **Harvey Eckert** for suggesting we invite Andy to one of our meetings. A lot of great stuff appeared on the screen!

The business meeting centered around our financials and the recent flooding at the MBT Annex. It was reported that several Board members have been very active in the flood cleanup effort and disposition of the fleet. We outlined the impact of the flooding on the general Hershey area and that given the short timeframe we had available to us, may have been able to save only four buses but putting our volunteers and their own vehicles in jeopardy.

Ed Wolf outlined the recovery plan of the buses following the flood. We awarded members **Mike and Lynn Burshtin** as "Volunteers of the Year" for their dedicated and outstanding work in aiding the cleanup and recovery.



Unfortunately, all paper goods such as timetables, transfers, etc. were lost but all of the models were intact and are now in the Museum cases.

Attendees were interested in membership numbers, profit on gift shop sales, website hits, etc. which were reviewed.

The business meeting lasted about 90 minutes followed by lunch which was catered by local caterer "What IF" restaurant (yes, that is the name).

Capital Area Transit, with senior operator T. Kraszewski, drove one of their D-4505's through the snow on a truncated bus tour of the Hershey area. Included was a drive by to show the flood affect on the Annex .

It appears that our 2011 meeting was a success from both a membership and financial standpoint. We estimate our net to be about \$5,000. Thanks to all who attended and/or contributed.

Additional annual meeting photos can be viewed on Page 7.

From the Board Room....

BOARD OF DIRECTORS

J. Thomas Collins, President
Capital Area Transit

**Robert L. Smith, Vice President/
Archives**
Johnson Bus, Inc. (retired)

John Dockendorf, Secretary
PennDOT, Bureau of Public
Transportation

Edwin P. Wolf, Treasurer
E and B Transportation
~~~~~

**Donald R. Barlup**  
Requipment, Inc.

**Jot Bennett**  
Capitol Bus Company (retired)

**Clarence Cornell**  
ABC Companies, Inc

**Walter R. Earl**  
Capital Area Transit

**Elaine Farrell, CAE**  
Pennsylvania Bus Association

**Ralph J. Fetrow**  
Members 1st Credit Union

**Constantine Mandros**  
S. Mandros Imported Foods Co.

**Ken McNelis**  
Klein Transportation

**Howard D. Nice**  
Greyhound Lines, Inc.

**Oliver J. Ogden**  
Hempstead Bus Corp. (Retired)

**Sharon Ogden, Webmaster**  
ASI/ESI  
~~~~~

**The Museum of Bus
Transportation**
161 Museum Drive
Hershey, PA 17033
717.566.7100 ext. 119
Fax 717.566.7300
www.buseum.org

Year 2011 In Review

It is hard to believe that this is the final Musings newsletter for the calendar year 2011; where did the year go? For the MBT, it has been an unusually tough one. First, we had the theft of some tools and parts from our Annex location, then, secondly, we were really hit hard with the September flooding. The Annex, ironically, sits in a 100 year flood plain.

Fortunately, through the support we have received from friends, members, and industry people, we will survive both of these situations and emerge as a stronger organization.

The 2011 board elections are over with incumbents **Ed Wolf, Don Barlup, Jot Bennett, and Ken McNelis** all re-elected by the membership.

Two very valuable Board members, **Sharon and Oliver Ogden**, will leave the Board at the close of 2011. We will miss their respective talents as Gift Shop managers, webmasters, and volunteer coordinators. Oliver has agreed to continue on as curator which involves planning and organizing our displays.

Longtime members **John Dockendorf and Bob Smith** will oversee the MBT portion of the gift shop starting in 2012. Please submit any ideas or items you would like us to possibly market by calling them through our MBT office number.

Ralph Fetrow, along with new member **Mike Ross**, continue to manage our investments, most of which are in structured CDs. We have made two withdrawals from the master account so far this year with the smaller one to tap into some of the interest we earned.

Our net income, from the June 2011 Spring Fling was \$6,689.47 which is only slightly lower than the net profit for the 2010 event. We plan to continue the same format used this year which includes holding the vendors flea market in the AACA Museum.

Gift shop sales, like attendance at the Museum which is down 7% from last year, are below the 2010 levels. It should be noted that the Museum was closed for several days as a result of a major electrical problem which closed the Museum for four days, painting which closed the Museum another three days, then several weather related problems resulted in additional closings. The general economy has not been especially kind to any of the Hershey area attractions including Hersheypark's attendance during 2011.

2011, Advisor **Terry Cosentino** suggested we look into designing a "collectible bus" that would be exclusive to us. The AACA Museum has an "Adopt a Car" program which would easily work with our buses. Under the AACA program, a member selects a car (in our case a bus) and then is responsible for the "caring and feeding" of it for a year which includes generally cleaning and polishing, signage, etc. There would be an up-front fee (still to be discussed). You will hear more about this at a later time.

We received a fair amount of industry coverage from **National Bus Trader** (kudos to editor Larry Plachno), **UMA's Bus and Motorcoach News**, the **Trailways Magazine**, **Pennsylvania Bus Association's Bus Digest**, and "**Old Cars Weekly**." The latter did a fine story on our '51 Checker, aka Transit Bus; thanks to Bob Tomaine for the research on this article.

For 2011 we are going to consolidate several of our smaller insurance policies, i.e. a \$391,000 policy on the Annex itself and an adjustment on the contents of the building itself to \$9,000. Directors and Officers coverage is covered by the AACA since we are the "Bus Region".

We have been so pleased with the various donations of models, literature (safely secured in the AACA Museum), hat badges, etc which several of you have sent us over the past year.

We have surely had better years than 2011 but are looking forward to 2012. Thanks to all, have an enjoyable Holiday season, and start planning to visit us in 2012.

Your MBT Board



Board Meetings & Events

BOARD MEETINGS

December 6, 2011
January 3, 2012
February 7, 2012
March 6, 2012
April 3, 2012
May 1, 2012
June 5, 2012
July 3, 2012
August 7, 2012
September 4, 2012
October 2, 2012
November 6, 2012
December 4, 2012

SPRING FLING

June 2, 2012

AACA MEET WEEK

October 10-13, 2012

ANNUAL MEETING

October 27, 2012

Regular Board meetings are held at the AACA Museum in Hershey at 6:30 pm and are open to all members.

As a possible revenue generator in

MBT Committee Reports....

Real Estate/Building Committee

The day before the September flood which greatly affected Union Deposit located right beside Hershey, PA, representatives of the MBT's Real Estate/Building Committee met with the contractor who built our current Annex building. The purpose of the meeting was to see if it was possible to erect a second building on our present storage lot to accommodate the antique buses that were being stored outside. Ironically, the contractor and a civil engineer both agreed that we could build there with confidence because of the 100 year flood plain the property sits on.

As a result of the devastating flood to the Union Deposit and Hershey areas, we have decided to abandon the idea of constructing a second building to house the buses, and are looking into another site to either lease or purchase.

At the present time we plan to keep the Annex, but will look into possibly putting it on the market for sale once the clean up is completed.

Fleet Committee UPDATE

To keep all MBT members informed about our fleet and the Annex location, we would like to update the everyone on the following items:

THEFT OF TOOLS. The theft of tools belonging to the MBT was discovered on August 2, 2011. The police were contacted immediately and a report filed. It has been determined that we lost \$5,570 in donated tools by member Warren Shepp of Century Tours. The MBT had insurance but since there was a \$5,000 deductible on the policy to keep our premium affordable, we will receive \$570 from the insurance company.

Thanks to our very supportive members, to date we have had donations to replace both our battery chargers, the volt/lod tester, two socket sets, and our 3/8" air hoses.

As a result of the theft, the MBT has installed a new lock system and are alarm system.

THE FLOOD. As all members know by now, we had our entire Annex property underwater during the unexpected September, 2011 flood. A list of all affected vehicles was sent to our membership shortly after this devastating flood.

We are now happy to announce that we already have ten of our flooded

vehicles up and running through the tireless hours of mechanical work by **Ed Wolf, Paul Johnson, and Jason Mellot.** In addition, **Mike and Lynn Burshtin of Richland, New Jersey** (near Atlantic City) have spent over 100 hours of volunteer time power washing the Annex building and the exterior and interior of vehicles. Their dedication is phenomenal and we thank them very much. As this phase is completed, one by one the buses will be going to the restoration companies. The Peter Pan Bus is already completed and the Michaud and the 4104 are next. **Trans-Bridge** has volunteered to take its bus back to restore themselves and return it to the Museum upon completion.

The Fleet Committee would like to thank the following individuals for their many hours of volunteer cleanup and work at the Annex: **Jot Bennett, Lou Berger, Joe Butler, Tom Collins, Phil Crey, Dave Carey, Doug Diehl, Walter Earl, Dan Lehman, Ken McNelis, and Tom Mozer.**

Our final push before winter is to power wash the entire Annex Building and move as many vehicles out of the winter elements. In the Spring, volunteers will continue with our restoration efforts.

Fleet Committee Work Sessions

The Fleet Committee is planning the following work sessions for the remainder of **November, 2011:**

Tuesday, November 22
Saturday, November 26

For the December Work Session dates, please check the Museum's website to see if any sessions will be scheduled.

Work Sessions are from 8:00 A.M. until 3:00 P.M. at the Annex property located at 7281 Union Deposit Road. We need all kinds of workers including mechanical and non-mechanical. Clean up and restoration can be done by any one of our members.

Please contact **Ken McNelis** at 610-203-7998 or **Tom Mozer** at 717-343-0058 to let them know as soon as possible if you are planning to attend a work session. We need to know how many volunteers are coming to plan the tasks to be completed for that work session. You will also be notified if a work session is cancelled and you have called to sign up for it.

MUSEUM OF BUS TRANSPORTATION

Thank you Tool Wish List Contributors



The Museum would like to thank the following individuals and organizations for responding to the Museum's request for tools and parts:

- **Paul Teriemezian** of Reno, NV donated money which was used to purchase a Volt/Load Tester
- **Fullington Trailways** of State College & Clearfield, PA donated two 50 Foot Air Hoses
- **Prevost Car** donated \$500 which was used for the purchase of a 24 volt Battery Charger
- **AACA Museum Special Events Council** donated \$700 which was used for the purchase of a second 24 volt Battery Charger and tools to be determined as need arises

We are still in need of the following items which we are hoping some of our members and readers can assist with:

- Used Tires sized 900x20, 2R22.5, and Goodyear B305/75R24.5
- Heavy Duty Jumper Cables
- 3 Ton Floor Jack
- 3/4" Drive Socket set
- Flair Nut Wrenches
- Chicago Pneumatic - CP864 Disc Sander
- Chicago Pneumatic - CP714 Air hammer/Chisel

If you can help us with these much needed tools and tires or any other tools you think the Museum might benefit from, please contact **Ken McNelis** at 610-203-7998 or **Tom Collins** at 717-566-7100 Ext 119

We appreciate our members support. The Museum is a 501(c)3 non-profit organization and the Museum can provide you with a letter for the value of your donated tools or tires for tax purposes. Thank you for helping us maintain your fleet.

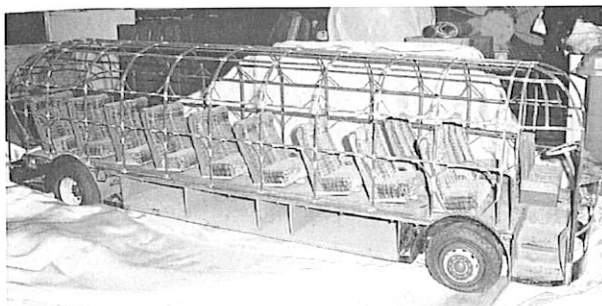
OUR PDG-3701 MODEL....

New member **Kenn L. Stoliker**, a retired Edwards Motor Transit (Edwards Lakes to Sea System) operator, called our office to advise us that he had a special Model which he wanted to donate.

As background, a gentlemen by the name of Henry Menegus started to build this GM Silverside when he was a worker in a Greyhound garage. Work progressed but when the Second World War broke out he was unable to obtain the brass he had been using to build the model bus. Henry passed away before he could complete the bus.

Don Coffin suggested to Mr. Menegus' daughter that Kenn Stoliker would be a person to finish the bus and, ultimately keep it, or as Kenn said he wanted to donate it to us.

Kenn built over 150 model buses over a 20 year period so he set out to complete this one including the decals and painting. We have never seen a more detailed scratch-built model; it proudly occupies a position atop one of our model cases. Thanks to Kenn for his donation and welcome aboard as a new member.



GM 3302 ►

Member **Cal Little** had this former Werner Bus Lines, Inc. PG-3302 (3302-090) on his property for several years. In 2009 he sold it to Chief John E. Hiscock of Loxahatchee, Florida who restored it to its original Werner livery. Although configured as a motor home, Chief Hiscock wanted it to "look like a bus"; he has, indeed, accomplished that. *The photo on the right was taken at the Museum in late 2010. Thanks to Cal Little for providing us with this data and photo.*



Member Tom Kane ►

Tom Kane brought his 4509 former Red Arrow Lines #81 to our Spring Fling in June of this year. **Tom Mozer** supplied us with this excellent photo. The bus was driven from suburban Philadelphia to Hershey and never missed a beat.

Congratulations to Tom on the restoration.



Other Fleet News

Our Fixible Two-Level Vistaliner is now at ABC's Camden, NJ location undergoing restoration. Thanks to Board member **Clancy Cornell** and Camden facility manager Mike Laffen, the coach was moved to their facility in early September. It should appear in Trailways livery by early Spring.

Passing of Dave Roberts

Dave Roberts died on August 18, 2011. Dave was an artistic model builder known as Roberts Miniature Transports. His model buses are on display at transportation museums across the country including the Museum of Bus Transportation in Hershey. In addition, his works have been featured in model building magazines. Dave was 74 and was a member of the Motor Bus Society.

Brick Pavers

Brick Pavers are still available to MBT members for purchase. You can personalize a brick and become a permanent

part of the Museum. The 8 inch by 8 inch Logo bricks has room for 3 lines of text and cost \$250 each. Please call the Museum office for more details (717-566-7100 Ext 101)

Members Contribute Generously ►

We wish to acknowledge the many MBT members and friends who have recently made cash donations – either unrestricted for the general operating account or specifically for flood relief: We have tried to acknowledge each of you personally but if we missed some one PLEASE let us know by calling the office at 717-566-7100 X 119. Thanks VERY MUCH to all of you.

CONTRIBUTORS

John Shoup
Don Flayhart
Mike Burshtin
Pat Collins
Frank Nageotte
Janet Miller
Ken McNelis
Howard Wales
Maureen Leo
Gerald Podlucky
Mike Lennon
Stan Fetter
George Lindsay
Robert Malley
Charles Webb
Dan Lehman
C and C Tax Service
Prevost Car
Don Barlup

Linda Cosentino
Jeff Evenmeyer
John Calnan
Tom Moran
Tom Mozer
Ed Everson
Bill Gregory
Stan Lubowicki
AACAM Special
Events Committee
Dino Mandros
Richard Phillippi
Howard Nice
Bruce Koreseck
Robert Sauer
John Wolfe
Eric Love
Tom Collins
Dave Pickeral
William Millar

Model Bus Musings By Doug Campbell

UNIQUENESS AT ITS BEST!



First this month is a unique model bus that resembles an old Brill, but although rather generic, is really an eye-catching display piece! And that's just what it was made for...actually as a showcase display for **Fossil** brand watches. There is also a matching silver tin with this bus on it to hold a watch but, unfortunately I just can't put my hands on mine here to photograph!

If you were lucky enough to attend the recent MBT annual meeting during a snow storm in Hershey on Octo-

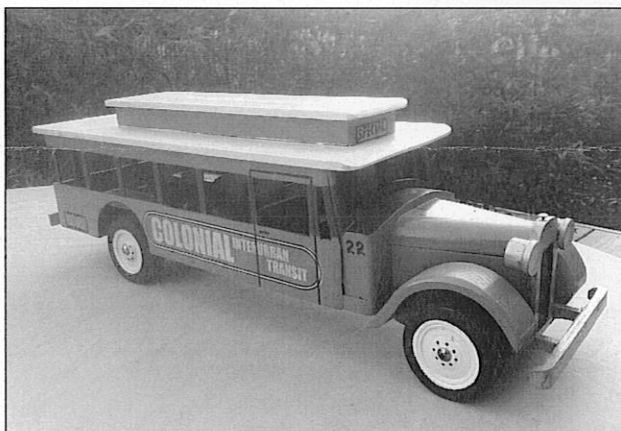
ber 29th, you would have seen the HUGE poster that also was used as a Fossil display piece. It is now on display at the MBT! The model bus is **HEAVY**, and looks like plaster or a cast resin material. It is almost 8 inches long, is painted tan, red, and silver, and has wonderful molded passengers and a driver **ONLY** in the left hand windows! These were used by Fossil dealers about 10 years ago, and sometime turn up on e-bay or at toy shows for sale. They were never sold to consum-

ers except at a special Fossil store in Hawaii, where I am told they retail some



Made By Sauter

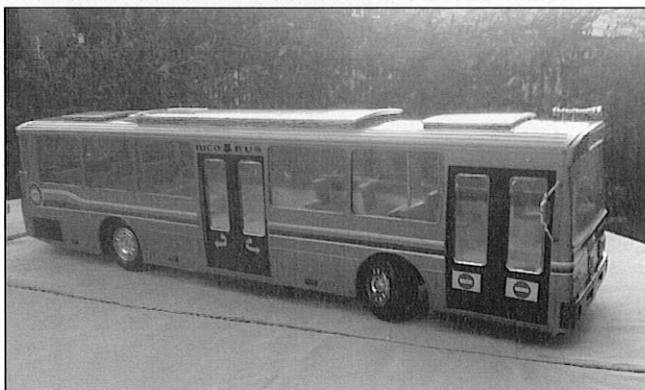
Next is what resembles an old Yellow coach which is a piece of American Folk art made by New York toy vehicle craftsman and artist **Harold Sauter**. This is his bus number B-1322, which is all handmade, and one-of-a-kind. It sold at the recent Hershey antique auto show at Harold's unique booth. He has made 1,322 buses so far!! It is 22 inches long, all wood, and painted in



an attractive gray/blue/white with "**Colonial Interurban Transit**" labels, which are made by Harold's children. The model bus has free rolling wood wheels, and a fully furnished interior all crafted by hand from wood by this wonderful American toy artist! I have many of Harold's wonderful bus models in my collection, and they are my most treasured! From time-to-time some have been offered in the MBT gift shop at Hershey.

RICO Toys of Spain

Finally for this issue is maybe one of my **LARGEST** bus models, and also obtained in that huge, and wonderful flea market at the recent Hershey Antique Auto Show. It is a 1970's toy bus which luckily was still in the original, but tattered box. It is a 30 inch long plastic remote-controlled **MERCEDES-BENZ** city bus, made by **RICO Toys of Spain**. This bus is full of wonderful details, actually runs on the remote attached battery controller, with horn, lights, opening doors, steering wheels, and detailed full interior. A clear sliding roof panel opens to access



the interior. My model is in a nice bluish/gray, and I remember seeing one back in the 1970's in maybe a toy shop such as **FAO Schwartz** in New York City. It was

then a very expensive toy, and in **SUCH** a large scale, it really looks real and impressive on display! It is marked **RICO #43**, and was seemingly an authorized Mercedes model at the time. This was quite a child's play toy for the 1970's period! Happy Collecting!

This Old Bus : By Tom Evans

Tom Evans, who hails from Spokane, Washington will be our guest columnist for this issue. Bob DeVine's column will appear in the next issue of Musings.

Tom reminds us that the Golden Gate Bridge and Transportation District assumed responsibility for providing bus service from San Francisco into Marin and surrounding counties in 1972. This service had been operated by Greyhound Lines who used a variety of equipment.



The 40' semi-suburbans had 8V-71 engines and VS-2 transmissions, and all were 96" wide. Each had single doors with all forward facing reclining seats built to seat 45 but later converted to 49 passengers. These units were in the 800 series and Tom owns ex #810.

A gentleman bought 16 of these buses in a bid with intentions of exporting them to China. The group of 5305's and 5307's proved to be too old, however, for export and the deal fell through.

Tom once operated a fleet of buses and informs us that he owned more than one hundred new looks – all used!

He goes on to describe this particular vehicle, focusing on its mechanical condition which he generally rates as good. There is some

transmission slippage which was common with Vs-2 at this age.

The interior and exterior including the flooring are also in good repair. He thinks the bus has had one re-paint other than the original factory job.

Tom is "downsizing" and wants to retain only his beloved 4104. He wrote to us describing this unique "fishbowl" with a veiled message that he might want to donate it to the MBT.

The fleet committee, due to housing constraints, will review the detailed description Tom sent us and get back to him in the near future.

This article arrived in time for us to showcase this interesting vehicle and we thank Tom for it.

Along the Line continued

My Favorite Bus....

Always of interest to those of us who volunteer to "work the Museum floor", especially during busy weekends, are the folks who come up to us with their own "bus story."

Often these are about a certain bus they rode home from the service in, a bus their school used for a class trip, or just something they drove or thought was "neat".

When they describe it we are usually able to point out it out on our Timeline and the response is often "Yep, that's the one!".

Back in the 1960's when they did a lot of local charter work, a former Washington DC transit driver pulled the photo below out and gave it to one of our docents; that was his favorite bus! The photo shows an ex-Southeastern Greyhound Lines ACF-Brill 1c-41 as DC Transit #9. The photo was taken at the Capitol building In August of 1961.

Unfortunately, we did not get this gentleman's name; perhaps he wanted to remain "below the radar" but the photo brings back some great memories.

Gift Shop Sales...

Gift shop sales for the first 8 months of 2011 were \$7861.24 with profit on those sales for the same period netting to \$3966.66.

Various transit related book sales accounted for \$3553.49 of the total sales revenue. Note we said transit related as not all of book items are bus items – we have rail, trolley, trackless trolley, and other books available, also.

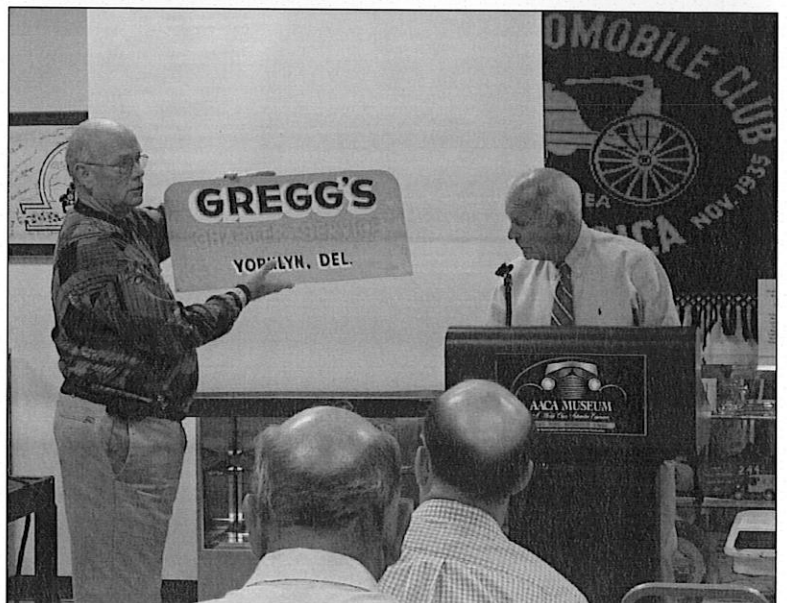
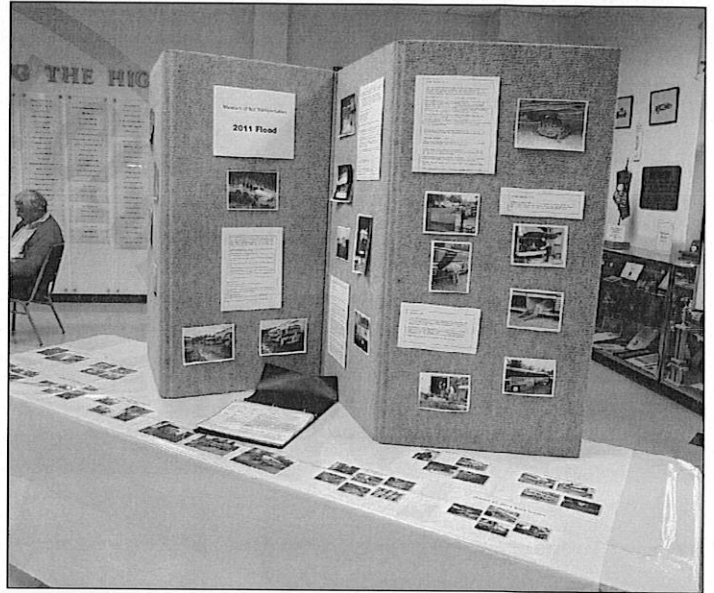
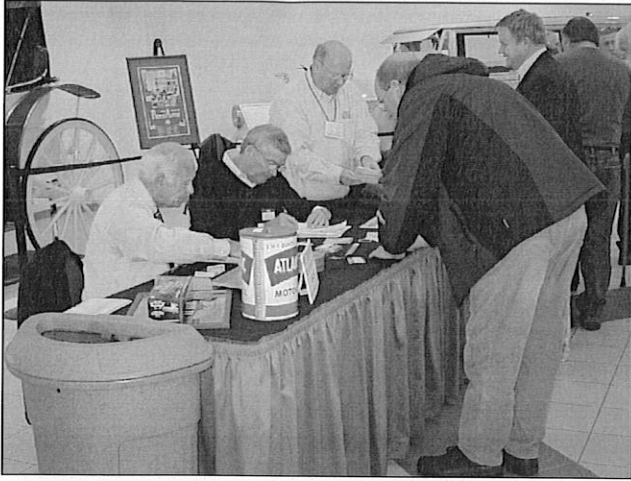


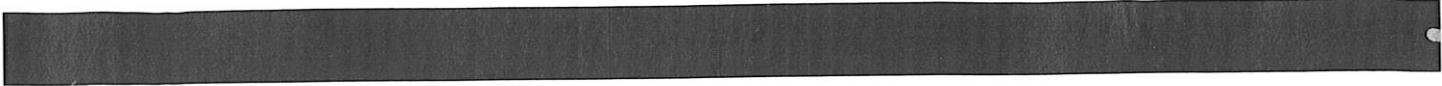
Welcome New Members

The Museum would like to acknowledge and thank the following individuals for their recent memberships:

Franklin Barber
Sandra Gregg
Richard Gregg
Hagey Coach Inc.
Jim Maust
Brian Quinn
Doc Rushing
Kenneth Stoliker
Glenn Watson

2011 Annual Meeting Continued





Museum of Bus Transportation
161 Museum Drive
Hershey, PA 17033

Fall 2011 Bus Musings

HARRISBURG PA 171

17 NOV 2011 PM 1 L



John Dockendorf
448 Meadow Drive
Camp Hill, PA 17011

1701131227

